



Duke Farms

Family Activity: Plant Parts Search

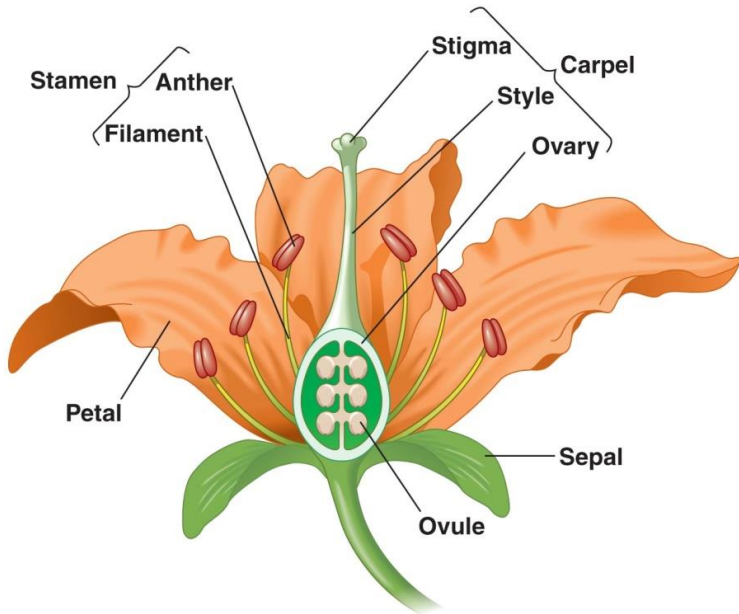
A family activity for all ages

Plants are part of habitats, which are homes for animals. Just like people have different parts that perform different functions, plants have many parts that perform different functions.

Procedure: Go outside to an area with plants. It can be on a trail, in a park, or in your backyard. Below you will find a list of plant parts and their functions, as well as some diagrams of plants parts. There is a check box next to the name of each part. Can you find all these parts out in nature? **REMEMBER, these plants are homes to many types of animals, DO NOT pick or collect the plant material!**

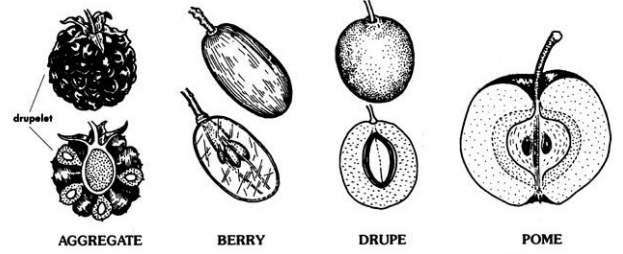
Plant Part	Function	Description	Found
Leaf	Collects energy from the sun to make food for the plant	Often green, flat, attached to a stem	
Stem	Support structure for leaves and flowers	Above-ground portion of plant bearing buds and leaves	
Flower	Reproductive part of the plant, colorful flowers attract pollinators	Often colorful structures on plants in a variety of shapes	
Fruit	Contains seeds, often a dispersal mechanism	Fleshy or dry, occurring where the flower was.	
Bark	Protection from animals and weather	The outer layer of shrub and tree branches and trunks, often rough and brown	
Pistil	The female reproductive part of the plant.	Typically in the center of a flower	
Stamen	The male reproductive part of the plant. Holds the pollen	Typically surrounds the pistil	
Petal	Attracts pollinators	The colorful part of a flower	
Sepal	Protects the buds before opened	Green structures at the base of flowers	

Flower Anatomy

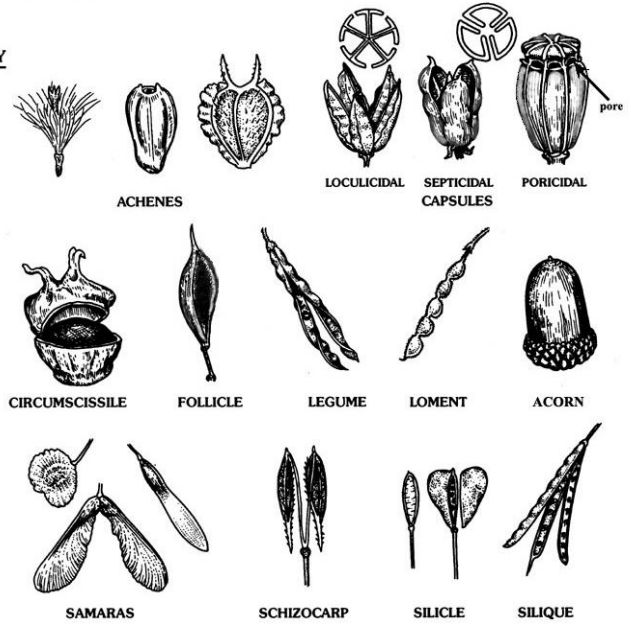


Types of Fruit

FLESHY

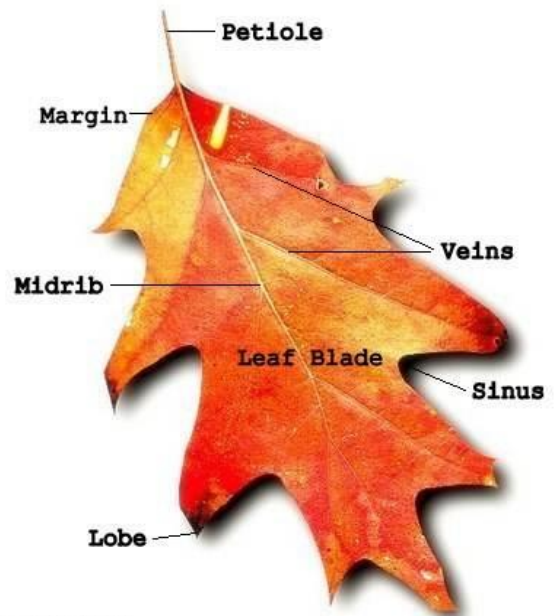
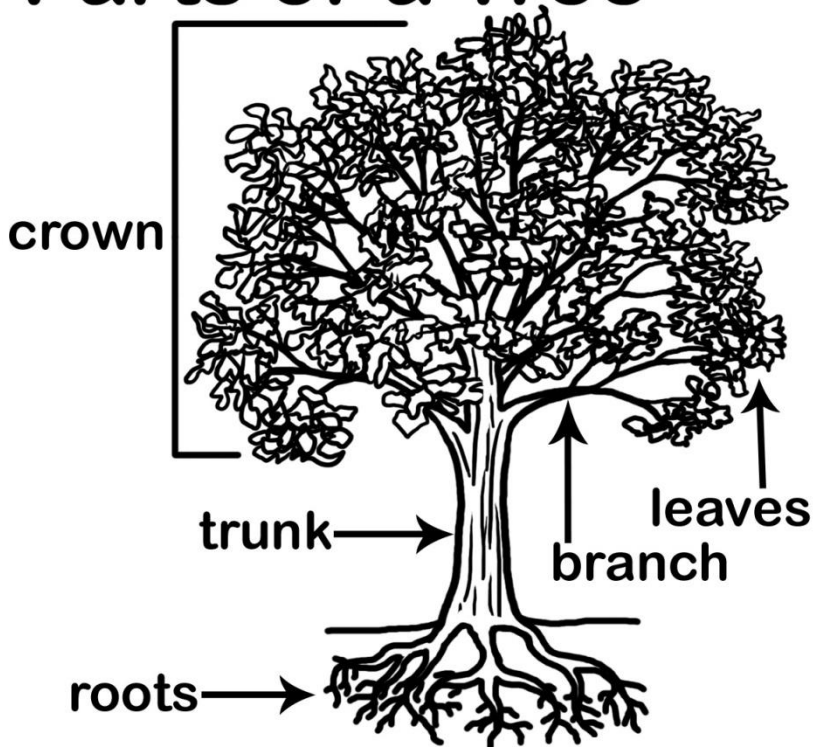


DRY



modified from Swink, F. and G. Wilhelm. 1994. *Plants of the Chicago region*. 4th ed. Indianapolis: Indiana Academy of Science.

Parts of a Tree



Leaf Anatomy